



Snow White



Ivory White



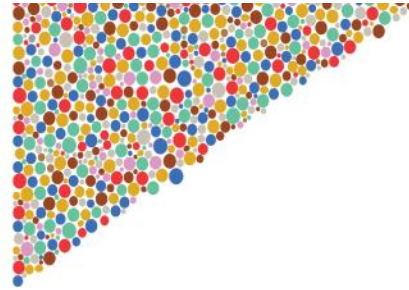
Buckskin Brown



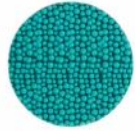
Sunglow Yellow



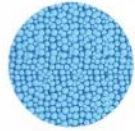
Brick Red



Autumn Brown



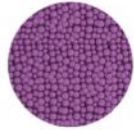
Spring Green



Baby Blue



Royal Blue



Electric Purple



Pumpkin Orange



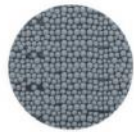
Ruby Red



Misty Grey



Jet Black



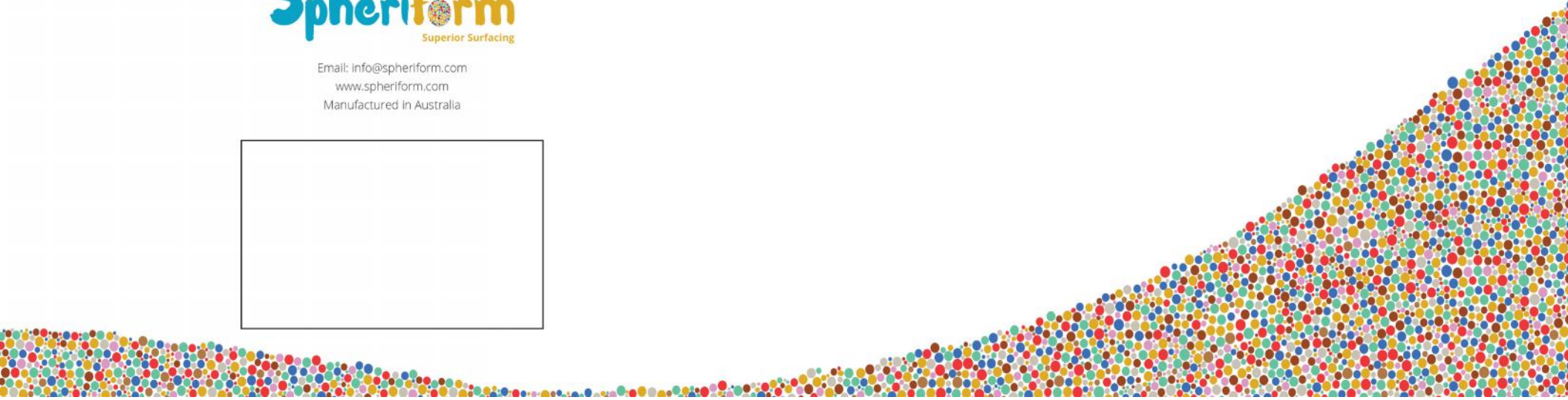
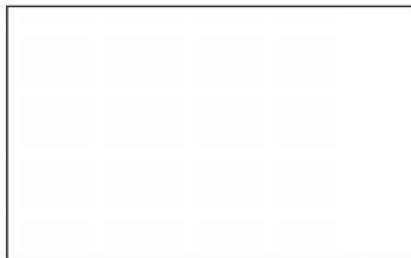
Dusk Grey

Spheriform

Superior Surfacing



Email: info@spheriform.com
www.spheriform.com
Manufactured in Australia



Spheriform is a revolutionary surfacing system using a combination of highly UV stable polyolefin granules mixed with an aliphatic two-component polyurethane binder and then poured in place. The result is a flooring surface exhibiting exceptional resistance to fading, alkalines and chlorines and provides a flexible, non slip, porous and safe surface for water parks, splash-pads and general play areas.

Spheriform is supplied in a flexible coloured granule formulation in sizes ranging from 1-3 mm. A 1:1 mix by weight of smaller to larger granules is recommended for best drainage and anti-slip performance. A range of 15 bright and engaging colours are available to suit your project requirements.

All Spheriform installations are provided with a minimum 5 year warranty against manufacturing defects and fading, when laid by our approved certified installers and maintained in accordance with the Spheriform maintenance plan.

Spheriform's wide range of colours offer architects and end users alike a superb choice of design options, and the longlasting brightness of our granules ensure your recreation area remains looking vibrant and new, year after year.

Advantages of Spheriform

- ✓ Excellent resistance to UV degradation.
- ✓ Excellent slip resistance in both wet and dry installations.
- ✓ Highly porous.
- ✓ Surface temperature markedly lower than other flooring materials such as EPDM.
- ✓ Highly resistant to chlorine and alkaline attack.
- ✓ Easy to maintain.
- ✓ Large range of bright colours available.
- ✓ Extremely abrasion resistant.
- ✓ Flame Resistant.
- ✓ Fully compliant to EN1177 and ASTM F1292 safety standards.



Contact your nearest Spheriform dealer today for more details, or visit our website on:

www.spheriform.com



Wet Area
Footpaths



Water Parks



Swimming Pool
Surrounds



Splash Pad



General Play Areas
with low fall heights